



Collaborative on Health and the Environment

eNewsletter - October 2013

[Not yet a CHE Partner? Join CHE now](#)

[Invite a colleague to join CHE](#)

[Send us feedback](#)

Contents

[CHE Partnership Calls and Special Announcements](#)

[Working and Regional Group Updates](#)

[Announcements and News Highlights](#)

[Reports, Resources and Other Updates](#)

CHE Director to participate in the Robert Wood Johnson Foundation's Pioneer Pitch Day

Last month, CHE hosted a national partnership call on emerging research regarding an>the human exposome titled, [The Exposome: Measuring Multiple Factors Impacting Our Health](#). This month, the Robert Wood Johnson Foundation has invited CHE's director, Elise Miller, to pitch an idea she entitled "Human Genome + Human Exposome = Your Health." She will elaborate on this idea along with seven other finalists at RWJF's first-ever "[Pioneer Pitch Day](#)" to be held October 16th in New York City. Please see the [RWJF blog](#) featuring Elise, which includes her original idea as well as information about the other presenters and judges. We wish her well!



Elise Miller, MEd

CHE Partnership Calls

CHE Partnership call: Environmental Justice and the Superfund Research Program: Community Collaborations Making a Difference

Thursday October 24, 2013 at 10:00 am Pacific / 1:00 pm Eastern

[RSVP for this call](#)

Environmental Justice is the fair treatment for people of all races, cultures, and incomes, regarding the development and enforcement of environmental laws, regulations, and policies. The NIEHS Superfund Research Programs (SRP), via Community Engagement Cores (CEC), has a strong history of working with communities to support environmental justice goals. Partnerships with communities and community-serving organizations are the cornerstone of CEC activities.



Dr. Phil Brown

This call features three of the SRP's CEC's and their innovative community engagement work: Dr. Phil Brown, Brown University SRP; Margaret Reams, Louisiana State University SRP; and Arizona State University SRP's Denise Moreno. Staci Rubin, a community partner of the Boston University SRP, will moderate and offer comments.

Dr. Phil Brown will address his program's environmental health and justice outreach and education across Rhode Island, which includes working closely on environmental health and justice education and outreach with their community-based partner organizations; expanding after-school and evening environmental health education, and working with multiple levels of government to develop comprehensive environmental legislation on remediation and reuse. In Arizona, Denise Moreno Ramirez will discuss how they are addressing the US-Mexico Border region that is plagued by a growing environmental health crisis resulting from inadequate environmental infrastructure, uncontrolled disposal of hazardous waste, and widespread exposures to heavy metals from mining and metal processing. She will talk about their work to empower underrepresented community



Denise Moreno Ramirez



Dr. Margaret Reams

members of the Border region to become active participants in recognizing and resolving hazardous environmental contamination risks to human health. Margaret Reams of LSU will discuss work with residents and local environmental leaders facing potential exposure to contaminants from Superfund sites, including collaboration with the Louisiana Environmental Action Network (LEAN), a public interest organization with over 100 affiliated groups, to reach leaders and members of grassroots environmental organizations.

CHE Partnership call: Endocrine Disruptors and Reproductive Health Across the Lifespan

Friday November 8, 2013 at 9:00 am Pacific / noon Eastern

Hosted by the CHE Fertility and Reproductive Health Working Group

[RSVP for this call](#)

Chemicals that can alter the function of the endocrine system are ubiquitous in our environment. The Endocrine Society has defined an endocrine-disrupting chemical (EDC) is an exogenous chemical, or mixture of chemicals, that can interfere with any aspect of hormone action. EDCs may affect the regulation of hormone synthesis, secretion, and actions and the variability in regulation of these events across the life cycle. Endocrine disruptors present significant risks to reproductive health and fetal development, as well as other health endpoints such as thyroid function, changes in metabolism, and obesity.

This call will review the mechanisms by which endocrine disruptors may interfere with reproductive processes, examine early life breast development as a prime example of tissue sensitive to endocrine disruption, and discuss regulatory efforts at the national and international level designed to limit exposure to endocrine disrupting chemicals.

Special Announcements

Save the date: Northwest Children's Environmental Health Forum Healthy Environments for Healthy Babies: Preventing Harmful Environmental Exposures Before and During Pregnancy

December 4, 2013 8:00 AM - 4:00 PM

Tukwila Community Center, Tukwila, WA

Concerned about the effects of environmental exposures before and during pregnancy on babies' health? Join the CHE Washington Children's Environmental Health Working Group for this day-long forum featuring national environmental health experts.



Registration information will be available soon. Cost: \$35, and scholarships and CEUs will be available. Visit the [CHE-WA website](#) for more information.

New CHE Partner Spotlight features Peter Whitehouse, MD, PhD

CHE Partner Peter Whitehouse, MD, PhD, is a professor at Case Western Reserve University and the University of Toronto; a geriatric neurologist at University Hospitals Case Medical Center; and co-founder of The Intergenerational School. He was also a key member of the organizing committee for the Healthy Environments Across Generations conference held at the New York Academy of Medicine in 2012. In this CHE Partner Spotlight, Dr. Whitehouse discusses his work addressing healthy living and learning across the lifespan, the success of The Intergenerational School, and the many eclectic endeavors which continue to inspire him.



Dr. Peter
Whitehouse

[Read the full interview](#)

CHE quarterly Top 10 list:

For the third quarter of 2013, CHE has selected stories and studies that come from a wide range of environmental health topics: antibiotic resistance, journal editors' views on endocrine disruptors and policy, medical societies' statements on exposures, air pollution, arsenic, origins of cancer, environmental impacts on mental health, Fukushima, and Wal-Mart. See the full list on the [CHE blog](#). Comments are welcome.

Resources from recent CHE calls:

If you missed any of the following CHE calls, you may listen to MP3 recordings and find

supporting materials at the following links:

- October 3, 2013: [Preconception Risk Reduction](#)
- September 18, 2013: [The Exposome: Measuring Multiple Factors Impacting Our Health](#)
- September 12, 2013: [Endocrine Disrupting Chemicals: Exposure, Research and Regulation](#)

You can subscribe via podcast to receive notifications of new call recordings added to the CHE archives. [View a list of past calls and subscribe to the podcast.](#)

CHE Working and Regional Group Updates

Stay in touch with CHE through social media:

Visit [CHE's blog](#) to read recent posts.

Visit CHE's [Facebook page](#).

Join CHE on [Twitter](#). CHE now tweets during most Partnership calls. Join the online conversation by following CHE on Twitter.

CHE Asthma

~ coordinated by Genon Jensen, info@healthandenvironment.org

~ **New evidence on air pollution and lung cancer**

A recent article in the Lancet Oncology presents findings from individuals across Europe showing that exposure to particulate matter air pollution increased the risk of lung cancer.

[Read more](#)

~ **Perfumes in public places and asthma**

The summer edition of *Oasis Allergies*, the quarterly publication of the French Association for the Prevention of Allergies (AFPRAL) and the Belgium Financial Planning Association (FPA), is partly dedicated to the growing problem of reaction to perfumes.

[Read more](#)

~ **European Lung Foundation launches new website**

The new website provides information on over 20 lung diseases and risk factors, including indoor and outdoor air pollution and a number of lung conditions caused by the environment.

[Read more and visit website](#)

~ **Portuguese environmental health journal features children's health and air pollution**

The latest issue of the Portuguese Society of Environmental Health journal features an article on air quality and children's health by HEAL. The Environmental Health journal is produced in collaboration with the Spanish society.

[Read more](#)

CHE Climate Change

~ coordinated by Genon Jensen, info@healthandenvironment.org

~ **Second Climate and Health Summit to take place during UN climate negotiations**

On November 16th the second Climate and Health Summit will take place in parallel to the UN climate negotiations in Warsaw, Poland. HEAL will act as a local convening partner for the Summit, which is organized by the Global Climate and Health Alliance under the auspices of the WHO.

[Register and read more](#)

~ **HEAL meets public health stakeholders and civil society in Poland**

This summer HEAL met with public health stakeholders in Warsaw as well as with energy policy experts from Polish civil society. The visit marked the start of a new HEAL project in Poland to highlight the links between air pollution, energy and people's health.

[Read more](#)

~ **New study: Children will bear brunt of climate change impact**

Most comprehensive climate change review to date warns of risks to children, with Unicef arguing that children have been largely left out of the debate so far.

[Read more](#)

CHE/SEHN Cumulative Impacts ~ coordinated by Carolyn Raffensperger and Elise Miller, info@healthandenvironment.org

~ **Cumulative Impacts call: Cumulative Impacts and the US Environmental Health Movement** Tuesday November 12, 2013 at 11:00 am Pacific / 2:00 pm Eastern

[RSVP for this call](#)

This call will feature Kate Davies, D.Phil, MA, Core Faculty, Center for Creative Change at Antioch University Seattle; Clinical Associate Professor, School of Public Health, University of Washington; and author of [The Rise of the U.S. Environmental Health Movement](#) (2013). Dr. Davies will explore how the US environmental health movement has addressed cumulative impacts from its historical roots in the Scientific and Industrial Revolutions to the present-day. In particular, Kate will discuss some of the movement's current strategies--how they draw attention to the problems of cumulative impacts and how they can help to prevent them. These strategies include personalizing environmental issues to make them more real and immediate to the public, leveraging the case for precaution, changing the markets for toxic chemicals, and advocating for environmental justice.



Dr. Kate Davies

CHE Diabetes-Obesity

~ coordinated by Sarah Howard, sarhow@gmail.com

~ **Upcoming Events**

[American Diabetes Association 6th Disparities Partnership Forum](#)

Oct. 21-22, Arlington VA

The American Diabetes Association will be holding its 6th Disparities Partnership Forum, entitled *Overcoming Diabetes: Diabetes Care in High Risk Populations*. This year's Forum will focus on cultural competency, health equity and health literacy as it relates to health care and social determinants of health. Participants will have the opportunity to learn from Hispanic/Latino, African American, Asian American Native Hawaiian & Pacific Islander and American Indian/Alaska Native thought leaders and practitioners.

[Obesity Week: Where Science and Treatment Meet](#)

Nov 11-16, Atlanta GA

Obesity Week 2013 is the inaugural event co-locating the American Society of Metabolic and Bariatric Surgery (ASMBS) and The Obesity Society (TOS) annual meetings. In doing so, the over 60 years of combined experience in the study of obesity and its management are reflected in an interdisciplinary program from which all attendees will benefit.

~ **New articles and research published in academic and scientific journals**

[Diethylhexyl Phthalates Is Associated with Insulin Resistance via Oxidative Stress in the Elderly: A Panel Study](#). Kim JH, Park HY, Bae S et al. 2013. PLoS.One. 8(8):e71392.

[Association of Low to Moderate Levels of Arsenic Exposure With Risk of Type 2 Diabetes in Bangladesh](#). Pan WC, Seow WJ, Kile ML et al. 2013. Am.J.Epidemiol

[Genetic Susceptible Locus in NOTCH2 Interacts with Arsenic in Drinking Water on Risk of Type 2 Diabetes](#). Pan WC, Kile ML, Seow WJ et al. 2013. PLoS.One. 8(8):e70792.

[Chronic Exposure to PCBs \(Aroclor 1254\) Exacerbates Obesity-Induced Insulin Resistance and Hyperinsulinemia in Mice](#). Gray SL, Shaw AC, Gagne AX, Chan HM. 2013. J.Toxicol. Environ.Health A 76(12): 701-715.

CHE Working Group on Electromagnetic Fields

~ coordinated by Antoinette Stein, nettestein@gmail.com

~ **American Academy of Pediatrics calls for FCC to protect children from cell phone and wireless radiation**

The AAP letter "urges the FCC to adopt radiation standards" that 1) protect children's health and well-being from radiation emitted by cell phones and other wireless devices; 2) reflect how children and adults actually use their cell phones; and 3) provide sufficient information to enable consumers to make informed decisions when they purchase mobile phones.

[Read more](#)

~ **Report: Radiofrequency Toolkit for Environmental Health Practitioners**

The Radiofrequency Toolkit was developed in response to requests from BC's medical and environmental health officers to the British Columbia Centre for Disease Control (BCCDC) for assistance in assessing and communicating the risk to health of the many devices and applications which emit radiofrequency (RF) waves.

[Read more](#)

CHE Fertility and Reproductive Health

~ coordinated by Karin Russ, karin@healthandenvironment.org

~ **Recent reproductive health news**

ACOG, ASRM Committee Opinion: Exposure to Toxic Environmental Agents

The evidence that links exposure to toxic environmental agents and adverse reproductive and developmental health outcomes is sufficiently robust, and the American College of Obstetricians and Gynecologists and the American Society for Reproductive Medicine join leading scientists and other clinical practitioners in calling for timely action to identify and reduce exposure to toxic environmental agents while addressing the consequences of such exposure.

[Read more](#)

Human infertility: Are endocrine disruptors to blame?

Over recent decades, epidemiological studies have been reporting worrisome trends in the incidence of human infertility rates. Extensive detection of industrial chemicals in human serum, seminal plasma and follicular fluid has led the scientific community to hypothesise that these compounds may disrupt hormonal homeostasis, leading to a vast array of physiological impairments. This constitutes a serious public health issue that should not be overlooked. Therefore, precautionary avoidance of exposure to EDs is a prudent attitude in order to protect humans and wildlife from permanent harmful effects on fertility. Endocrine Connections.

[Read more](#)

~ New articles and research published in academic and scientific journals

[Mutation in folate metabolism causes epigenetic instability and transgenerational effects on development](#)

We found that a hypomorphic mutation of the mouse Mtrr gene results in intrauterine growth restriction, developmental delay, and congenital malformations, including neural tube, heart, and placental defects. Furthermore, we observed widespread epigenetic instability associated with altered gene expression in the placentas of wild-type grandprogeny of Mtrr-deficient maternal grandparents. Cell.

[Temporal comparison of PBDEs, OH-PBDEs, PCBs, and OH-PCBs in serum of second trimester pregnant women recruited from San Francisco General Hospital, California](#)

Prenatal exposures to polybrominated diphenyl ethers (PBDEs) can harm neurodevelopment in humans and animals. In 2003-2004, PentaBDE and OctaBDE were banned in California and phased-out of US production. PBDE exposures are likely declining due to regulatory action, but the relative stability in PCB exposures suggests PBDE exposures may eventually plateau and persist for decades. Environmental Science & Technology.

[Product-to-parent reversion of trenbolone: unrecognized risks for endocrine disruption](#)

This product-to-parent reversion mechanism results in unique diurnal cycling and substantial regeneration of TBA metabolites at rates that are strongly temperature- and pH-dependent. Photoproducts can also react to produce structural analogs of TBA metabolites. These reactions occur for structurally similar steroids, including human pharmaceuticals, suggesting that predictive fate models and regulatory risk assessment paradigms must account for transformation products of high-risk environmental contaminants like endocrine-disrupting steroids. Science.

CHE Healthy Aging and the Environment Initiative

~ coordinated by Maria Valenti, mvalenti@igc.org

CHE's [Healthy Aging and the Environment Initiative](#) continues to bring information about environmental influences on health across the lifespan to new audiences.

~ Recent and Upcoming Events

"Gray Goes Green" summit draws participants from all corners of Georgia

Nearly 200 Georgians shared ideas on sustainability, heard remarkable stories of environmental stewardship, learned Tai Chi, and enthusiastically welcomed CHE's Maria Valenti's presentation on healthy aging and the environment at the



Maria Valenti speaks on environmental health issues to an audience of 200 at the Atlanta Regional Council's summit "Gray Goes Green"

Atlanta Regional Commission's "Gray Goes Green" Lifelong Communities Summit 2013. The September 17th green event was appropriately held at the exquisite Atlanta Botanical Gardens, where attendees could enjoy exhibits and commune with nature between sessions. Summit participants were drawn from wide range of disciplines including city planners, nutritionists, environmental stewards, health professionals and other scientists, landscape architects, builders, aging services providers, and many others. This was the first ARC summit focused on the environment, and included presentations on health equity, the medicinal value of nature, horticultural therapy, and visions for a cleaner and greener Georgia.

~ New CDC Healthy Aging Data Portfolio

The US Centers for Disease Control's Healthy Aging Program offers a new tool, the [Healthy Aging Data Portfolio](#), which focuses on the health and well-being of older persons in the US. You can use the portfolio to examine a limited database of indicators, on topics from obesity to disability, to create custom reports for your area. It also includes links to major reports including the [State of Aging Health in America](#). The report warns that, "Unfortunately, current data on health-related behaviors among people aged 55-64 years do not indicate a positive future for the health of older Americans. If a meaningful decline in chronic diseases among older adults is to occur, adults at younger ages, as well as our nation's children and adolescents, need to pursue health-promoting behaviors and get recommended preventive services." Importantly, it underscores that, "Communities can play a pivotal role in achieving this goal by making healthy choices easier and making changes to policies, systems, and environments that help Americans of all ages take charge of their health." Good advice! - outlined in detail in our report *Environmental Threats to Healthy Aging* which you can [download at the CHE website](#).

~ Aging society and environmental health challenges

In a commentary in *Environmental Health Perspectives* titled [Aging Society and Environmental Health Challenges](#), Yun-Chul Hong of the Institute of Environmental Medicine, Seoul National University College of Medicine in Seoul, Korea, describes some important epidemiologic studies on environmental influences on elder health. They include the US Veteran's Administration's Normative Aging Study, established in 1963. Studies from this cohort include one by Peters et al (2010), which suggested that the combined effects of lead and stress modified the relationship between age and cognitive impairment. More recently, Schwartz et al. (2012) reported that long-term exposure to traffic particles was associated with increased blood pressure, a risk factor for coronary heart disease and stroke in elderly men. In the Korean Elderly Environmental Panel (KEEP) study, "short-term exposure to air pollution was significantly associated with elevated insulin resistance, which is regarded as a core pathogenetic mechanism of diabetes mellitus or metabolic syndrome (Kim and Hong 2012). In another study using the KEEP cohort, Bae et al. (2012) reported that bisphenol A exposure was associated with increased blood pressure and decreased heart rate variability, suggesting that the elderly might be more susceptible to the possible cardiovascular effects of this ubiquitous endocrine-disrupting agent."



CHE Regional Working Groups Updates

CHE Alaska

~ coordinated by Pamela Miller, pamela@akaction.org

~ CHE Alaska call: **Breast Cancer and the Environment: Prioritizing Prevention**

Wednesday October 16, 2013 at 9:00 am Alaska / 10:00 am Pacific / 1:00 pm Eastern.

[RSVP for this call](#)

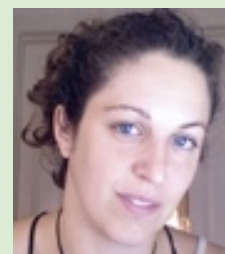
Despite decades of productive breast cancer research, the number of women diagnosed with breast cancer continues to rise. A federal report *Breast Cancer and the Environment: Prioritizing Prevention* released earlier this year concludes that preventing exposure to environmental risk factors is the most promising path to decrease incidence of breast cancer. The report includes the largest to-date survey of



Nancy Buermeyer

peer-reviewed science on breast cancer and the environment, finding that environmental factors such as toxic chemical exposure increase breast cancer risk. It calls for a national, comprehensive, cross-governmental breast cancer prevention

strategy. Join [Breast Cancer Fund](#) guest presenters Connie Engel, Science and Education Manager and Nancy Buermeyer, Senior Policy Strategist for a discussion of the report's findings and research and policy recommendations.



Dr. Connie Engel

CHE HEAL

~ coordinated by Lisette Van Vliet, lisette@env-health.org

~ HEAL celebrates its 10th anniversary

On September 25th, [HEAL celebrated 10 years](#) of vibrant existence with a special evening reception at the European Parliament. HEAL's 2012 [Annual Reviews](#) highlights most recent accomplishments and collaborations, including the partnership with CHE. HEAL had the pleasure of welcoming the EU Commissioner for Environment Janez Potočnik to give the closing speech of its [Annual General Assembly](#) on September 26th.

~ New French book: *Toxic Planet: The Invisible Scandal of Chronic Diseases*



President of Réseau Environnement Santé (RES), André Cicoletta, has published a new book in which he shows that more than 50% of cancers are "location specific", and are therefore caused by factors related to the environment in which people live. The book, entitled, "Toxique Planète, le scandale invisible des maladies chroniques" (Seuil, 10 October 2013) reveals the huge inequality in rates of cancer, diabetes and stroke between different health departments in France.

[Read more](#)

~ Book review: *Only One Chance: How Environmental Pollution Impairs Brain Development--and How to Protect the Brains of the Next Generation*

A new book by Professor Philippe Grandjean describes how the human brain drain is taking place because of scientific fallacies and a lack of caution in our current use of industrial chemicals.

[Read more](#)

See also: ['Chemical brain drain' endangers generations of children](#), Environmental Health News

~ **What's disrupting you? Take action now for an EDC-free future**

Over the summer a coalition of public interest groups representing more than 31 organizations across Europe launched a fun and creative Take Action "photo initiative" to let governments know we want an EDC-free future. Supporting organizations include several CHE partners.

[Read more](#)

~ **Spanish documentary on EDCs launched, "In Small Print"**

Vivo Sano has produced a short documentary on the threat to our health from exposure to endocrine disrupting chemicals (EDCs).

[Read more](#)

CHE Washington

~ coordinated by Steve Gilbert and Aimee Boulanger, info@healthandenvironment.org

~ **CHE-WA Children's Environmental Health Working Group meeting**

The next CHE-WA Children's Environmental Health Working Group meeting will take place on Thursday October 10, 2013, 9:30 to 11:30 am. The meeting will feature Rod Tinnemore of Washington State's Department of Ecology Air Quality Program and a national expert on wood burning. Tinnemore will share what the Department of Ecology is doing to reduce wood smoke.

RSVP to 206-263-3082 or gail.gensler@kingcounty.gov

Location: Local Hazardous Waste Management Program in King County, 130 Nickerson St., Suite 105, Seattle, WA 98109.

Participate by phone: 206-684-1467

Announcements and News Highlights

EHN and its sister site, The Daily Climate, offer a wealth of valuable information each day at no cost to subscribers. The daily email subscriptions and the 350,000-item news archive have recently been supplemented by a Facebook page and Twitter feed.

Environmental Health News: email, Facebook, Twitter and a website archive

[Visit the website](#)

[Visit the EHN archives page](#)

[Sign up for EHN's free weekly e-newsletters](#) focused on children's health and energy and health

Friend EHN on Facebook by searching for Environmental Health News

October 2013 issue of *Environmental Health Perspectives* available online

[Read more](#)

October 2013 issue of *Environmental Factor* available online

[Read more](#)

CHE maintains a [news feed](#) of environmental health related news announcements and events collected from a multitude of sources on CHE's website.

Reports, Resources and Other Updates

Toolkit: Green Cleaning, Sanitizing, and Disinfecting: A Toolkit for Early Care and Education

The University of California, San Francisco, Institute for Health and Aging, Informed Green Solutions and the Center for Environmental Research and Children's Health introduce their new publication designed to educate early care and education (ECE) directors, providers, parents, and child care regulators on health risks of commonly used cleaning products and antimicrobial pesticides and to provide the tools programs need to transition to a "green cleaning" program. The Toolkit includes a curriculum, fact sheets, posters, a checklist, and a wallet card. It educates child care providers on the risks of commonly used cleaning products and antimicrobial pesticides and offers reduced-risk and non-chemical options.

[Read more](#)

Canadian Environmental Health Atlas

The Atlas is a single comprehensive picture of environmental health in Canada that will bring together in one document traditional routes of exposure (e.g. air, water and food quality) and the influence of human settlement on health (e.g. built environment, remote health and environmental degradation).

[Read more](#)

TEDX list of potential endocrine disruptors

This new search page includes 14 different categories to identify the uses and sources of exposure for each chemical.

[Read more](#)

CHE lists hundreds of reports, books, videos, databases and other resources in a searchable [Portal to Science](#) on CHE's website.

Thank you for taking the time to read the latest about CHE. As always, we welcome your questions and suggestions. Please direct comments to Elise Miller, Director of CHE, at elise@healthandenvironment.org

Best wishes,

Elise Miller, MEd, Director
Steve Heilig, Director of Public Health and Education at San Francisco Medical Society and CHE

Erika Sanders, Administrative Coordinator

You are receiving this message because you are subscribed to the CHE National listserv. This message comes to you from the Collaborative on Health and the Environment, online at: <http://www.healthandenvironment.org/>.

We encourage sharing of resources and welcome recipients of this email to forward it to others. However we do ask that you forward this message in its entirety, complete with its

attribution and footer.

[Forward email](#)



Try it FREE today.

This email was sent to erika@healthandenvironment.org by erika@healthandenvironment.org | [Update Profile/Email Address](#) | Instant removal with [SafeUnsubscribe™](#) | [Privacy Policy](#).

Collaborative on Health and the Environment | P.O. Box 316 | Bolinas | CA | 94924