



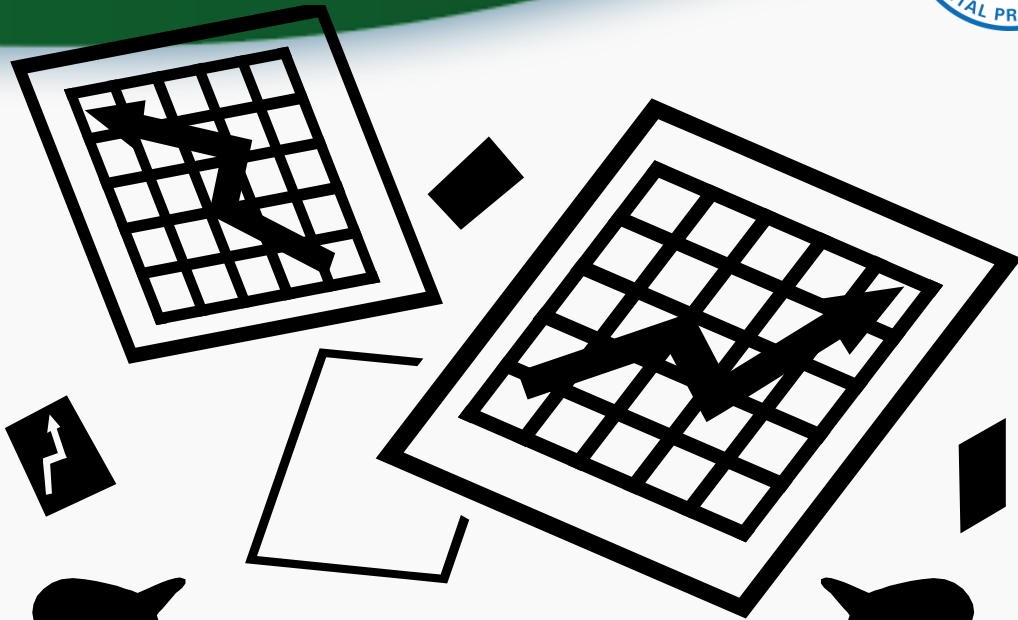
# Snapshot of EPA Data Tools for Community Use

Margo Young

Regional Children's Environmental Health Coordinator

EPA Region 10

March 14, 2013



3/13/2013

U.S. Environmental Protection Agency  
Region 10



# Environmental Laws and Data

## EPA Administers:

- Clean Air Act
- Clean Water Act
- Resource Conservation and Recovery Act
- Safe Drinking Water Act
- Emergency Planning and Community Right-to-Know Act
- Comprehensive Environmental Response, Compensation, and Liability Act
- And more...

EPA data is dictated by authority given to EPA by Congress





## Agenda

Broad overview of data tools:

- Envirofacts/Enviromapper
- ECHO
- TRI-specific tools
- MyRTK
- EJ View



my Right-to-Know





<http://www.epa.gov/enviro/>



## Envirofacts System Data Searches

Multisystem Search

AFS  
BR  
Brownfields-Cleanups  
CERCLIS  
Cleanups

ECHO/IDEA  
FRS  
▪ EZ Search  
▪ Organization Search  
GICS  
ICR

Locational Information  
▪ Locational Search  
PCS  
▪ Customized Search  
RADInfo

RadNet  
▪ Customized Search  
RCRAInfo  
SDWIS  
SRS  
TSCA  
UV Index

TRI  
▪ Customized  
▪ Facility Locator Tool  
▪ EZ  
▪ Form R  
▪ Form R & A Download  
▪ State Reports



- Quick Demo
  - Quick search
  - Advanced search
  - About the data
  - Data downloads

## Information About Regulated Facilities

<http://www.epa.gov/enviro/>



## LIST OF EPA-REGULATED FACILITIES IN ENVIROFACTS

The facility list below is based on the facilities that are visible with the map above. To refine your search to a more targeted area of interest, please visit the Envirofacts Multisystem [Interactive Map](#). To refine your search to a more targeted area of interest, please visit the [Envirofacts via an interactive map](#), please view your results in [EnviroMapper for Envirofacts](#)

Facility Information

ECHO Compliance Report

Facility is Regulated by this Program

FACILITY	AFS <sup>i</sup>	ACRES <sup>i</sup>	BR <sup>i</sup>	CERCLIS <sup>i</sup>	PCS <sup>i</sup>	RADInfo <sup>i</sup>	RCRAInfo <sup>i</sup>	TRI <sup>i</sup>	TSCA <sup>i</sup>
1ST AVE BRG BBC2 NE COR S MICHIGAN ST 1ST AVE SEATTLE, WA 98108 <a href="#">Summary Report</a> <a href="#">Facility Report</a> <a href="#">Compliance Report</a>							<a href="#">View Report</a>		
1ST AVE S S MICHIGA NW COR OF 1ST AVE S & S MICHIG SEATTLE, WA 981083241 <a href="#">Summary Report</a> <a href="#">Facility Report</a> <a href="#">Compliance Report</a>							<a href="#">View Report</a>		
1ST KENYON DRUM 1ST AVE S & SW KENYON ST SEATTLE, WA 98106 <a href="#">Summary Report</a> <a href="#">Facility Report</a> <a href="#">Compliance Report</a>							<a href="#">View Report</a>		
5TH AVE S SITE 8229 5TH AVE S SEATTLE, WA 98108 <a href="#">Summary Report</a> <a href="#">Facility Report</a> <a href="#">Compliance Report</a>							<a href="#">View Report</a>		
6249 AIRPORT WAY S 6249 AIRPORT WAY S SEATTLE, WA 98108 <a href="#">Summary Report</a> <a href="#">Facility Report</a> <a href="#">Compliance Report</a>							<a href="#">View Report</a>		



# ECHO

- Enforcement & Compliance History Online:  
<http://www.epa-echo.gov/echo/>

- Detailed Facility Report
  - ID numbers (including permits)
  - Basic info about the facility
  - Inspection and enforcement history
  - Demographic profile of surrounding area (3 miles)

Track  
Regulatory  
Involvement





# Envirofacts – Resume Demo

- Quick Demo
  - Quick search
  - Advanced search
  - About the data
  - Data downloads



<http://www.epa.gov/enviro/>



# Enviromapper

<http://www.epa.gov/emefdata/em4ef.home>





# TRI-Specific Tools

- Toxics Release Inventory (TRI)
  - ~700 industrial facilities in Region 10
  - ~650 toxic chemicals
  - Pounds per year released to air, water, and land or transferred offsite
- TRI Explorer: <http://www.epa.gov/triexplorer/>
  - Web search tool
  - Reports – Chemicals, Industry, State, and more
- TRI.Net: <http://www.epa.gov/tri/tridotnet/index.html>
  - Powerful downloadable database



# MyRTK for Mobile Devices

- My Right-to-Know: <http://myrtk.epa.gov/info/>
- Maps TRI facilities and air, water, or hazardous waste permit holders
- Users can:
  - Locate and identify nearby facilities
  - Identify chemicals released to air, water and land
  - Learn about health effects associated with chemicals
  - Learn about facility compliance history

# MyRTK

## Facility Report

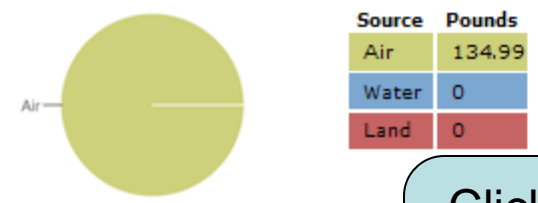
**ASH GROVE CEMENT CO**  
 Toxics Release Inventory ID = 98134SHGRV3801E  
 3801 E MARGINAL WAY SO, SEATTLE, Washington 98134  
 Industry: Cement

### CONTEXT

**County**  
 Less than 1% of TRI releases in King County, WA  
 73 other TRI facilities in King County, WA

**National**  
 Ranks 81 out of 120 TRI facilities in Industry: Cement industry.  
 (rank 1=highest releases)

### ON SITE RELEASES - TOTALS



### ON SITE RELEASES - BY CHEMICAL

MERCURY COMPOUNDS

ZINC COMPOUNDS

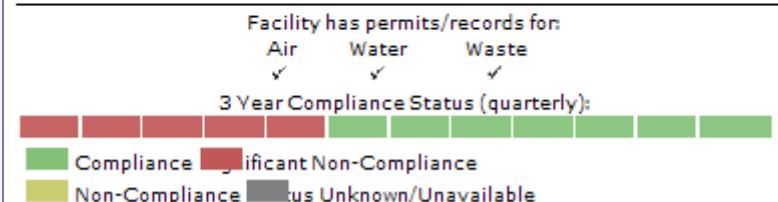
LEAD COMPOUNDS

DIOXIN AND DIOXIN-LIKE COMPOUNDS

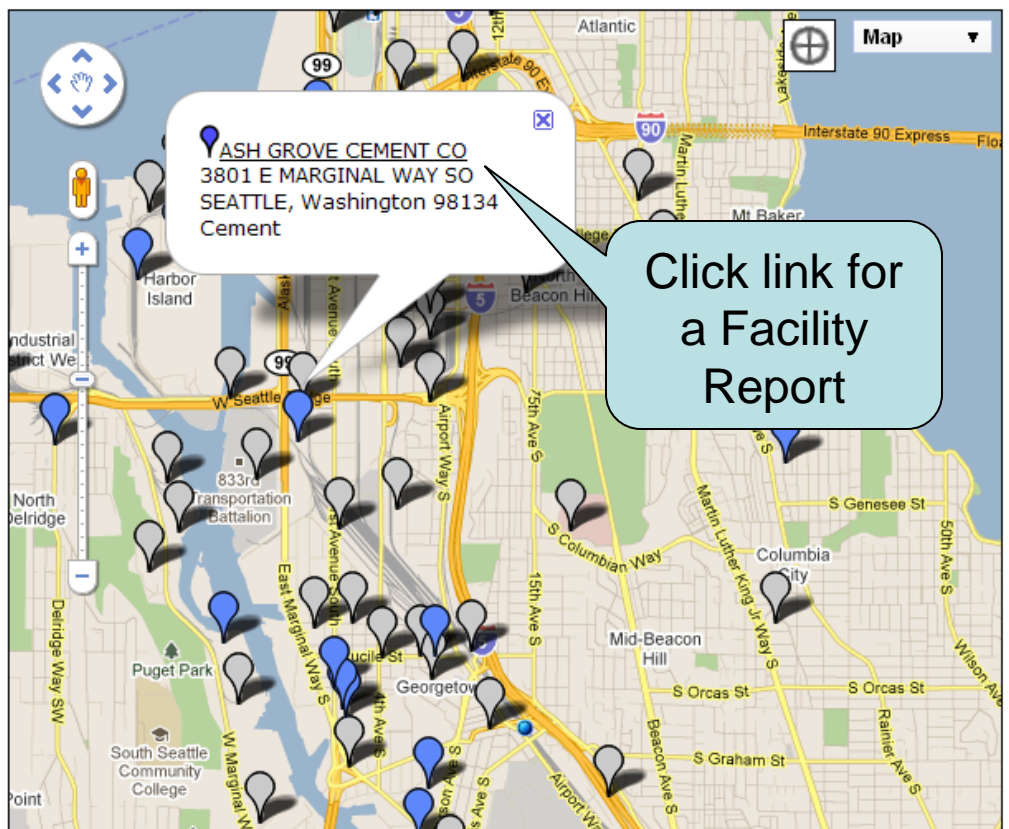
Air Water Waste

Click to see Chemical Hazard Info

### COMPLIANCE



## Map



Click link for a Facility Report



# EJView

<http://epamap14.epa.gov/ejmap/entry.html>



Create maps

Generate detailed reports

Choose geographic areas and data sets you want to see

- Demographic
- Health
- Environmental
- Facility-specific



## EJ View Helpful Links

- Description of EJView Map Features:  
<http://epamap14.epa.gov/ejmap/help/help.html?tab=3>
- Instructions on How to Define a Map Area:  
<http://epamap14.epa.gov/ejmap/help/help.html?tab=4>
- EPA Environmental Justice Home Page:  
<http://www.epa.gov/compliance/environmentaljustice/index.html>



# Questions?



my Right-to-Know







## For More Information

Margo Young

Regional Children's Environmental Health Coordinator

(206) 553-1287

[young.margo@epa.gov](mailto:young.margo@epa.gov)